



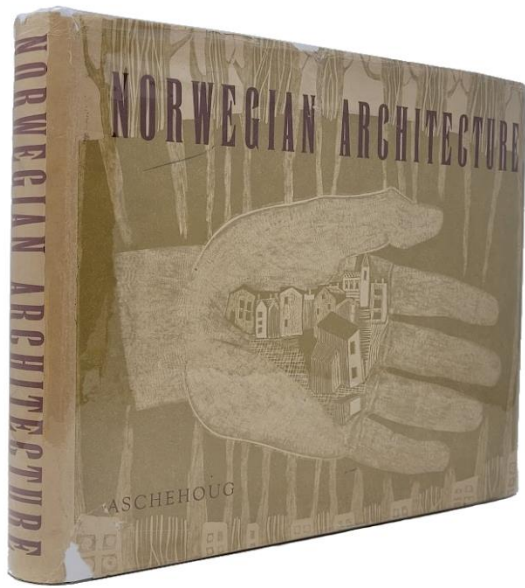
# MUNSTER & COMPANY, LLC

*Purveyors of Fine Books*

**E-LIST #7: ARCHITECTURE**

**FEBRUARY 11, 2025**

LUDWIG HOHLWEIN-M  
ENTWURF FÜR



1 - ALNAES, Eyvind; ELIASSEN, Georg; LUND, Reidar; PEDERSEN, Arne; PLATOU, Olav (compilers). *Norwegian Architecture Throughout the Ages*. Oslo: H. Aschehoug & Co., 1950.

424 pp. 24 x 30 cm. Black quarter leather with gilt titling to spine and illustrated paper covered boards, in an illustrated dustjacket with brown titling. Bumping and nicking to head

and tail of panels of dustjacket. One 3 cm closed tear to head and one 4 cm closed tear with chip missing to bottom of front panel of jacket. Some staining to upper corner of rear panel of jacket, which is protected in a mylar cover. Rubbing and some light wear to head and tail of boards. Bumping and rubbing to corners of boards. Interior is clean and unmarked. Binding sound.

\$125

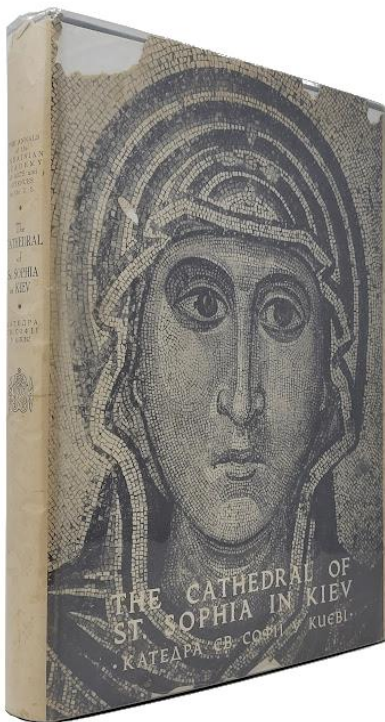
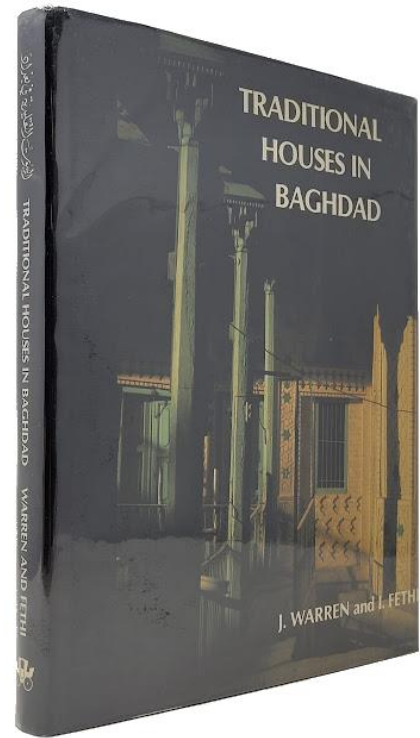
This book is the result of the work of a small group of people working in secret in Nazi-occupied Norway during WWII. In 1943, the Norwegian Authorities in London requested that the Association of Architects gather material for an exhibition to be held in London, yet the Association was under control of the Nazis and so the material was inaccessible. Despite this, the compilers of this book worked in secret to create a work that would cover the earliest known examples of Norwegian architecture up to what was then the present time. This comprehensive book is the result of many long nights working in blackout conditions and without a written mandate, which was deemed too risky for members of the secret committee.

2 - WARREN, John; FETHI, Ihsan. *Traditional Houses in Baghdad*. Horsham, England: Coach Publishing House Limited, 1982.

220 pp. 30 x 23 pp. Brown cloth covered boards with gilt titling to spine, in a glossy pictorial dustjacket with white titling; color and black and white illustrations. Some very light rubbing to jacket, which is consistent with normal shelfwear, and some light bumping to head of spine of jacket. Jacket is now protected in a mylar cover. Slight bumping to spine ends of book. Interior is clean and unmarked. Binding firm.

\$125

At the time of its publication, this book was the first of its kind, as there had never been a book on the architecture of housing in Baghdad published in English or Arabic. This book contains many photographs, plans, and a glossary of traditional Arabic architectural terms.



3 - POWSTENKO, Olexa; VETUKHIV, Michael (series editor). *The Cathedral of St. Sophia in Kiev*. New York: The Ukrainian Academy of Arts and Sciences in the U.S., 1954.

466 pp. 30 x 22.5 cm. Blue buckram covered boards with gilt titling to spine, in a pictorial dustjacket with black titling to the spine. Chipping to head and tail of panels of jacket, with a 5 cm closed tear extending from a 3 x 3 cm chip at the head of the rear panel of the dustjacket. Jacket is now protected in a mylar cover. Some light discoloration (presumably dampstaining) to head of spine and head of front and rear panels of book, with some rubbing and bumping to spine ends and corners of boards. Some light discoloration along gutter of title pages. Signed and inscribed in blue ink at head of half-title page by

series editor Michael Vetukhiv to L.C. Dunn. Interior otherwise clean and unmarked. Binding sound.

\$150

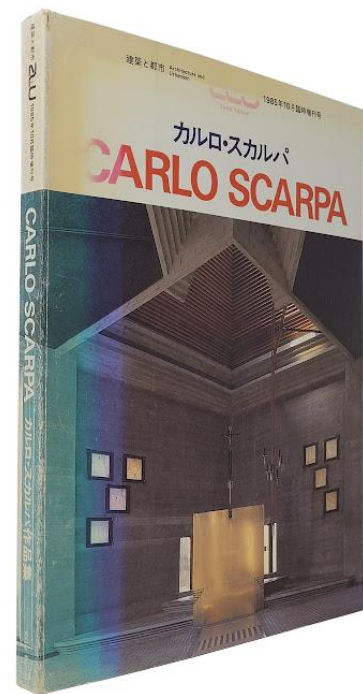
Generously illustrated, with text in both English and Ukrainian, this comprehensive book on the Cathedral of St. Sophia, is a special issue of The Annals of the Ukrainian Academy of Arts & Sciences in the U.S. The cathedral was named one of the Seven Wonders of Ukraine in 2007, and was listed as a World Heritage site that is considered 'in danger' due to the Russian invasion of Ukraine. Inscribed by the editor, this book was previously owned by L.C. Dunn, who was a developmental geneticist at Columbia, where the editor Michael Vetukhiv was also a geneticist.

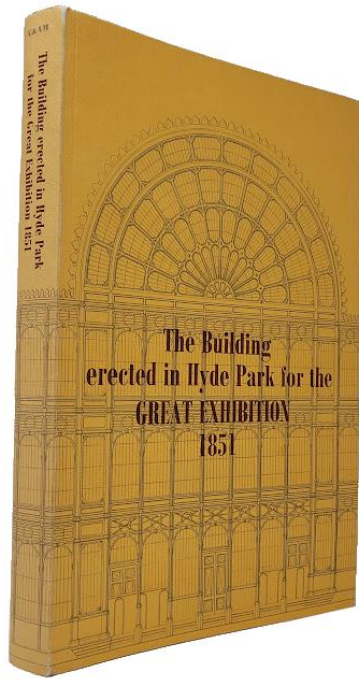
**4 - SCARPA, Carlo. *Carlo Scarpa: Architecture and Urbanism 1985 October Extra Edition.*** Tokyo: A + u Publishing Co. Ltd., 1990.

264 pp. 29.5 x 22 cm. Glossy, illustrated stiff paper wrappers with French-style flaps; text in English and Japanese. Fourth printing, dated May 25, 1990. Sunning and rubbing to spine, with uneven sunning to front and rear covers. Some pencil erasures to title and contents pages from previous seller's pricing. Interior otherwise clean and unmarked. Binding sound with no creases or cracks.

\$75

Born in 1906, the Italian architect and designer Carlo Scarpa is best known for his Museo di Castelvecchio in Verona and the Olivetti Showroom in Venice. His modern style often featured a unique marriage between Venetian and Japanese culture, which may be why this special edition of the Japanese publication, Architecture and Urbanism is dedicated to his work. Generously illustrated with photos and drawings, this special issue provides a wonderful overview of Scarpa's life and work.





5 - COWPER, Charles; DOWNES, Charles. *The Building Erected in Hyde Park for the Great Exhibition of the Works of Industry of All Nations, 1851*. [London]: [Victoria and Albert Museum], [1972].

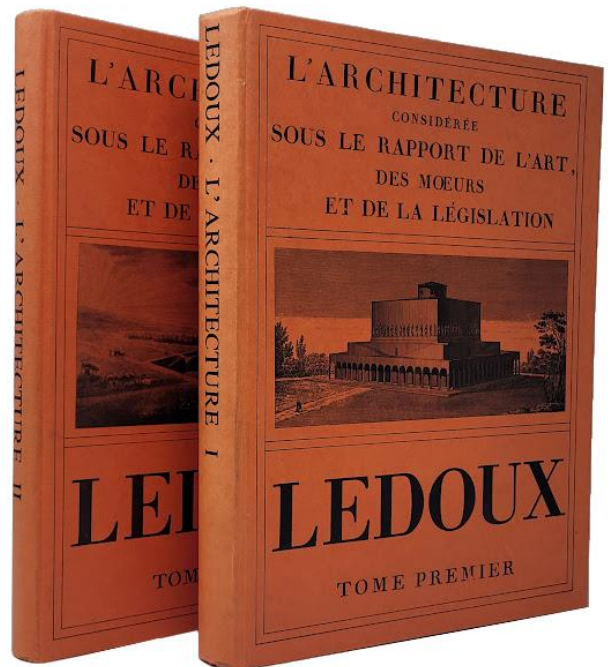
iv, 45 pp. + 28 folded leaves of plates. 30 x 21 cm. Stiff card wrappers printed in marigold with illustration in grey and titling in maroon. Light sunning to spine, with some rubbing to spine. Small bump to bottom corner of covers and text block. Some light foxing to fore-edge of text block. Previous owner's name stamp on inside of front cover. This book was previously owned by the architect Edward Charles "Chuck" Bassett, who designed the Oakland-Alameda County Coliseum and the Louise M. Davies Symphony Hall in San Francisco. Interior otherwise clean and unmarked. Binding firm, with no creases or cracks to spine.

\$150

Best known by its nickname, the Crystal Palace, the Great Exhibition building was built to display examples of the technological advances created during the Industrial Revolution. With nearly 1 million square feet of space, the building was three times the height of St. Paul's Cathedral, and contained nearly 300,000 panes of glass. The Palace was destroyed by fire in 1936, and this volume is a facsimile of the best surviving reference to the building, containing wonderfully illustrated plans, elevations, and sections of its construction.

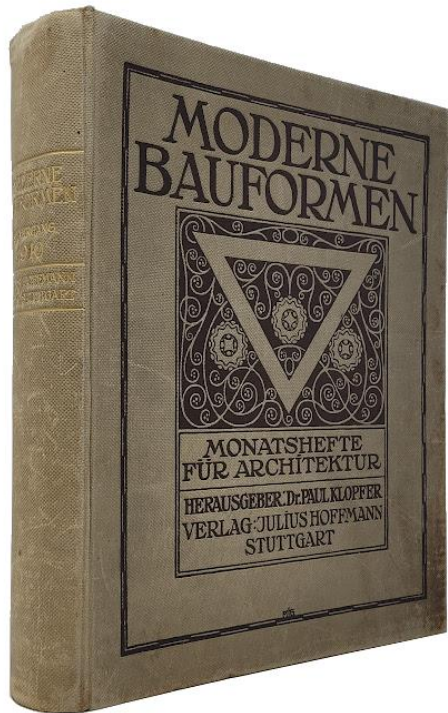
6 - LEDOUX, Claude Nicolas. *L'Architecture Considérée sous le Rapport de l'Art, des Moeurs et de la Législation, Tome Premier et Tome Second (2 Volume Set)*. Noerdlingen: Alfons Uhl, 1987.

240; viii, 300 pp. 35 x 26 cm. Orange paper covered boards with titling and illustrations printed in black. Second edition. Light bumping and rubbing to spine ends, with some light rubbing to corners of boards. Small amount of freckling to heads of text blocks. Interiors are clean and unmarked. Bindings both firm.



\$250

One of the earliest proponents of French Neoclassical architecture, the prolific architect Claude Nicolas Ledoux was funded by the French monarchy and is best known for his designs of the Royal Saltworks at Arc-et-Senans. This two volume set is a facsimile of his 1804 publication, which is a comprehensive collection of his designs, many of which he had reworked to better reflect the neoclassical style.



**7 - KLOPFER, Paul (editor). *Moderne Bauformen: Monatshefte für Architektur. IX - Jahrgang - 1910.* Stuttgart: Julius Hoffmann, [1910].**

630 pp. + 76 numbered color plates. 29 x 24 cm. Light brown cloth covered boards with dark brown titling to cover and gilt titling to spine; contains all 12 issues for the year 1910. Light sunning, soiling, and some scuffing to spine, with some soiling and light scuffing to covers. Two short closed tears (repaired) to front free endpaper, with previous owner's name and ownership inscription on half-title page. Some closed tears to a small number of pages at gutter, which have since been repaired. Binding sound. Overall, a very good copy of a bound collection of this important German magazine for architecture and interiors.

\$150

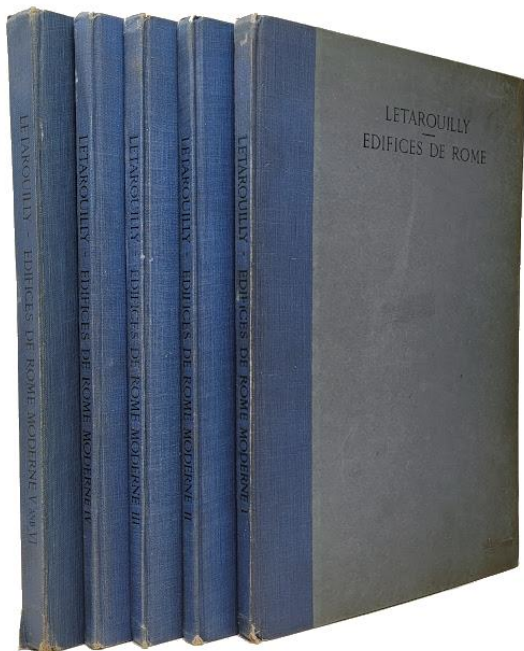
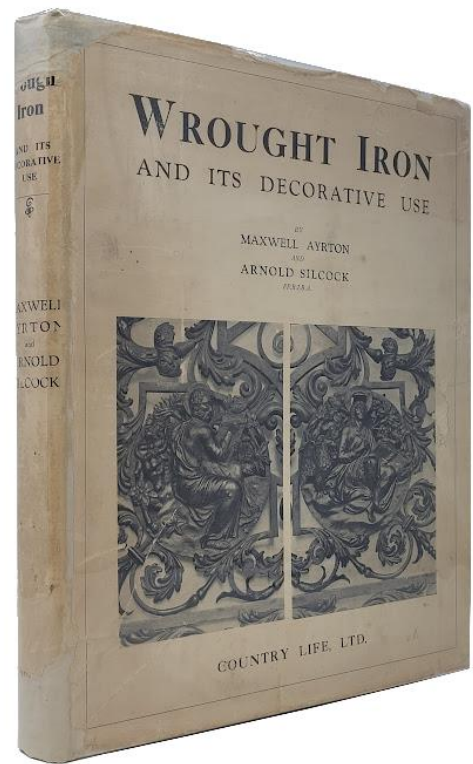
From one of the most important publishers of modern German architecture and design, this large volume is an early collection of all issues of *Moderne Bauformen* published in 1910. Generously illustrated with photographs and drawings in black and white and color, this particular early volume contains two color plates of work from the famous poster artist, Ludwig Hohlwein.

8 - AYRTON, Maxwell; SILCOCK, Arnold. *Wrought Iron and Its Decorative Use*. London: Country Life Ltd., 1929.

196 pp. 32 x 26 cm. Black and grey cloth covered boards with gilt titling to cover and spine, in an illustrated dustjacket with black titling. Toning and chipping to spine of jacket, with light soil, chipping and several tears to other panels. Jacket has been mounted on a cloth backing for preservation, and is protected in a mylar cover. Some very light bumps to spine ends and corners of boards. Some mild foxing to endpapers, with gift inscription from 1945 on front free endpaper. Interior is otherwise clean and unmarked. Binding sound.

\$125

Published when published work on wrought iron was sparse, this collection is chiefly comprised of English examples of wrought iron craftsmanship. With an emphasis on country houses and churches, this volume has a plethora of photographs of examples, and comes with its original dustjacket, which although battered, is fairly rare.



9 - LETAROUILLY, Paul. *Edifices de Rome Moderne, Six Volume Set (in Five Volumes)*. London: John Tiranti & Co., 1929.

viii, 62 pl.; iv, 63-118 pl., v-xv; x, 119-180 pl.; iv, 181-236, v-xi; xii, 237-298 pl., iv, 299-354 pl., v-xvii pp. 38 x 26 cm. Blue quarter cloth binding with blue paper covered boards and black titling to covers and spines. Volumes 1-4: Palais et Maisons, Volumes 5-6 (in one volume): Eglises et couvents. Rubbing and bumping to spines, with some short splits to tails of volumes. Some light bumping and wear to corners of boards. Mild to moderate toning to extremities of boards. Foxing to edges of text blocks and endpapers, with some foxing

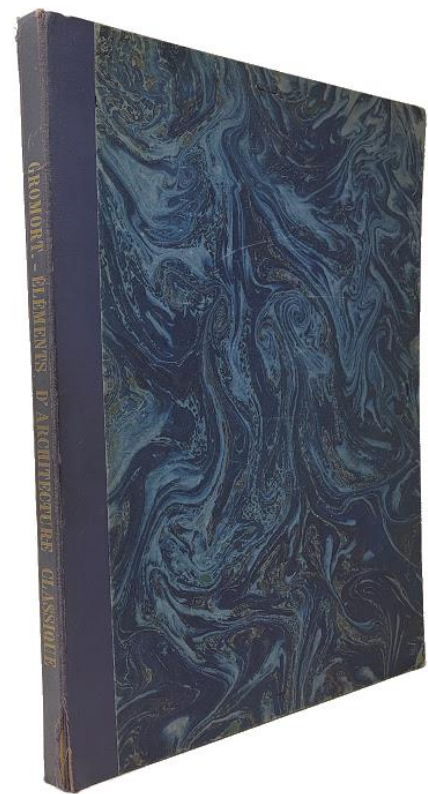
toward fore-edges of initial and final pages of each volume and occasional spots of foxing along gutters. Interiors otherwise clean and unmarked. Bindings sound.

\$150

Originally published between 1840 and 1855, *Edifices de Rome Moderne* is a collection of Letarouilly's detailed plans and drawings of noteworthy Classic Renaissance buildings in Rome. The series was so popular when originally published, that in the list of almost five hundred subscribers, the French Government alone took over one hundred copies. After returning from his time studying and drawing the buildings in Rome, Letarouilly eventually became the architect-in-chief of the Collège de France

**10 - GROMORT, Georges.** *Choix d'Éléments Empruntés a l'Architecture Classique: Et Donnant des Exemples Connus de l'Application des Ordres... Troisième Édition.* Paris: Augte. Vincent, 1920.

8 pp. + 70 numbered plates. 39 x 29 cm. Portfolio with blue cloth spine and marbled paper covered boards, with gilt titling to spine. Rubbing and bumping to spine ends of portfolio, with some splitting to sides of spine ends (3 and 5 cm). Some rubbing and light wear to edges of boards, with some bumping to corners. Cloth ties are no longer extant. Moderate toning to endpapers and first and final leaves. Some occasional finger soil, otherwise leaves are clean and unmarked. Small nick to head of final plate with some light creasing.

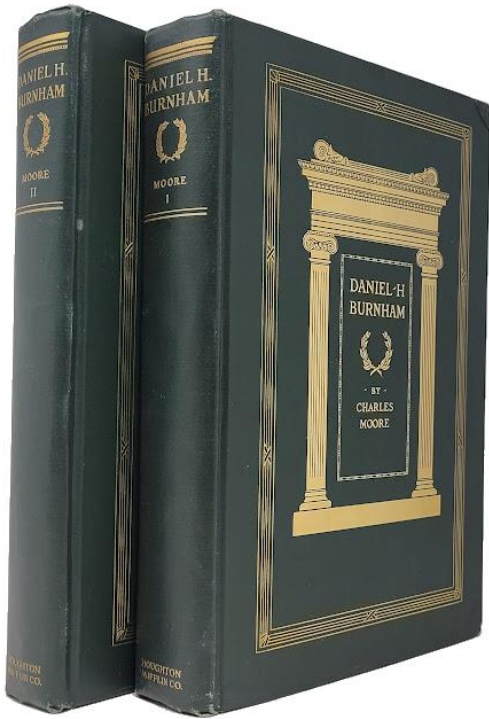


\$100

First published in 1910, the French architect Georges Gromort's *Choix d'Éléments...* has been reprinted in several different editions since its original printing. One of the most influential teachers at l'École des Beaux-Arts in Paris, in addition to this important survey, Gromort contributed other works on architecture such as *Essai sur la Théorie de l'Architecture* and *L'Architecture Romane*.



11 - MOORE, Charles. *Daniel H. Burnham: Architect, Planner of Cities*. New York: Houghton Mifflin Company, 1921.



xviii, 260; ix, 238 pp. 28.5 x 20 cm. Dark green cloth covered boards with gilt titling and decorations to covers and spines, top edge gilt; illustrated. Mild rubbing and slight bumping to spine ends, with rubbing and mild to moderate bumping to corners of boards. Some toning to endpapers, with previous owner's stamp on front pastedowns. Slight age toning throughout interior, with occasional light dampstains to the fore-edges of some pages. Bindings both firm.

\$150

A wildly successful architect from Chicago and proponent of the Beaux-Arts style, Burnham was the Director of Works for the World's Columbian Exposition of 1892/93, or 'The White City', as it has come to be known. In addition to several skyscrapers, the Washington Union Station, and the Flatiron Building in New York, Burnham also designed the Selfridges department store building in London. This illustrated, two volume biography of Burnham was previously owned by the architect Edward Charles "Chuck" Bassett, who designed the Oakland-Alameda County Coliseum and the Louise M. Davies Symphony Hall in San Francisco.

# MUNSTER & COMPANY, LLC

212 SW 3<sup>rd</sup> Street  
Corvallis, OR 97333 USA  
[www.munsterbooks.com](http://www.munsterbooks.com)

To Order:

Email [jon.munster@munsterbooks.com](mailto:jon.munster@munsterbooks.com)

Or call 541-740-3461

All items are subject to prior sale. We are more than happy to accommodate the needs of institutional clients, and offer the usual courtesies to members of the trade. Standard USPS shipping is complimentary within the US.

Expedited and International shipping is quoted at cost.

All items are returnable within 30 days for any reason. We accept major credit cards, checks, or payment through PayPal.

If you have any questions about the items presented here, or would like any additional photographs, please do not hesitate to ask.